

**UNIT II****DATABASE DESIGN**

**Entity-Relationship model – E-R Diagrams – Enhanced-ER Model – ER-to-Relational Mapping – Functional Dependencies – Non-loss Decomposition – First, Second, Third Normal Forms, Dependency Preservation – Boyce/Codd Normal Form – Multi-valued Dependencies and Fourth Normal Form – Join Dependencies and Fifth Normal Form**

**DATABASE DESIGN**

A well-designed database shall:

- Eliminate Data Redundancy: the same piece of data shall not be stored in more than one place. This is because duplicate data not only waste storage spaces but also easily lead to inconsistencies.
- Ensure Data Integrity and Accuracy

**Entity-Relationship Data Model**

- Classical, popular conceptual data model
- First introduced (mid 70's) as a (relatively minor) improvement to the relational model: pictorial diagrams are easier to read than relational database schemas
- Then evolved as a popular model for the first conceptual representation of data structures in the process of database design

**ER Model: Entity and Entity Set**

Considering the above example, **Student** is an entity, **Teacher** is an entity, similarly, **Class**, **Subject** etc are also entities.

An Entity is generally a real-world object which has characteristics and holds relationships in a DBMS.

If a Student is an Entity, then the complete dataset of all the students will be the **Entity Set**

**ER Model: Attributes**

If a Student is an Entity, then student's roll no., student's name, student's age, student's gender etc will be its attributes.

An attribute can be of many types, here are different types of attributes defined in ER database model:

1. **Simple attribute:** The attributes with values that are atomic and cannot be broken down further are simple attributes. For example, student's age.
2. **Composite attribute:** A composite attribute is made up of more than one simple attribute. For example, student's address will contain, house no., street name, pincode etc.
3. **Derived attribute:** These are the attributes which are not present in the whole database management system, but are derived using other attributes. For example, average age of students in a class.
4. **Single-valued attribute:** As the name suggests, they have a single value.
5. **Multi-valued attribute:** And, they can have multiple values.

**ER Model: Relationships**

When an Entity is related to another Entity, they are said to have a relationship. For example, A ClassEntity is related to Student entity, because students study in classes, hence this is a relationship.

Depending upon the number of entities involved, a degree is assigned to relationships.

For example, if 2 entities are involved, it is said to be Binary relationship, if 3 entities are involved, it is said to be Ternary relationship, and so on.

### Working with ER Diagrams

ER Diagram is a visual representation of data that describes how data is related to each other. In ER Model, we disintegrate data into entities, attributes and setup relationships between entities, all this can be represented visually using the ER diagram.

### Components of ER Diagram

Entity, Attributes, Relationships etc form the components of ER Diagram and there are defined symbols and shapes to represent each one of them.

Let's see how we can represent these in our ER Diagram.

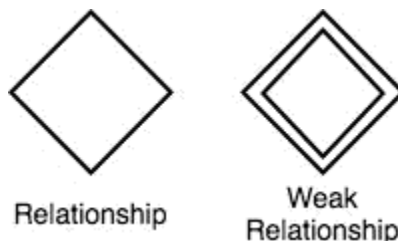
### Entity

Simple rectangular box represents an Entity.



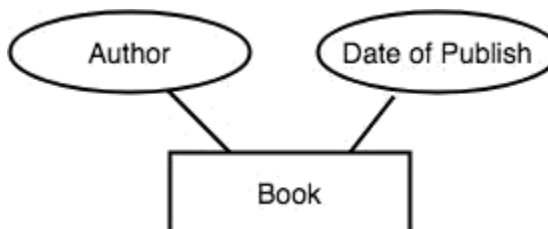
### Relationships between Entities - Weak and Strong

Rhombus is used to setup relationships between two or more entities.



### Attributes for any Entity

Ellipse is used to represent attributes of any entity. It is connected to the entity.



### Weak Entity

A weak Entity is represented using double rectangular boxes. It is generally connected to another entity.



### Key Attribute for any Entity

To represent a Key attribute, the attribute name inside the Ellipse is underlined.



**Derived Attribute for any Entity**

Derived attributes are those which are derived based on other attributes, for example, age can be derived from date of birth.

To represent a derived attribute, another dotted ellipse is created inside the main ellipse.



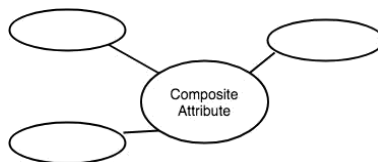
**Multivalued Attribute for any Entity**

Double Ellipse, one inside another, represents the attribute which can have multiple values.



**Composite Attribute for any Entity**

A composite attribute is the attribute, which also has attributes.



**ER Diagram: Entity**

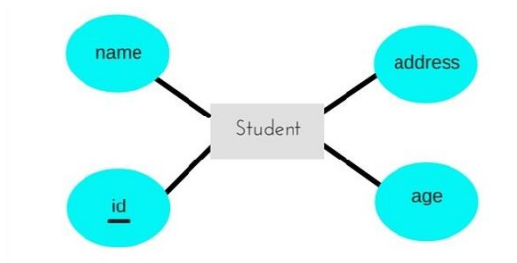
An Entity can be any object, place, person or class. In ER Diagram, an entity is represented using rectangles. Consider an example of an Organisation- Employee, Manager, Department, Product and many more can be taken as entities in an Organisation.



The yellow rhombus in between represents a relationship.

**ER Diagram: Key Attribute**

Key attribute represents the main characteristic of an Entity. It is used to represent a Primary key. Ellipse with the text underlined, represents Key Attribute.



### ER Diagram: Binary Relationship

Binary Relationship means relation between two Entities. This is further divided into three types.

#### One to One Relationship

This type of relationship is rarely seen in real world.



The above example describes that one student can enroll only for one course and a course will also have only one Student. This is not what you will usually see in real-world relationships.

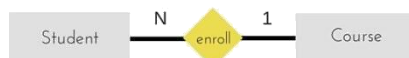
#### One to Many Relationship

The below example showcases this relationship, which means that 1 student can opt for many courses, but a course can only have 1 student. Sounds weird! This is how it is.

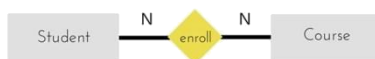


#### Many to One Relationship

It reflects business rule that many entities can be associated with just one entity. For example, Student enrolls for only one Course but a Course can have many Students.



#### Many to Many Relationship



The above diagram represents that one student can enroll for more than one courses. And a course can have more than 1 student enrolled in it.

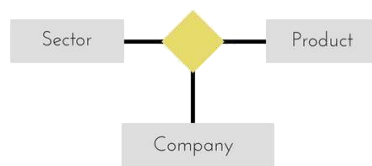
**ER Diagram: Recursive Relationship**

When an Entity is related with itself it is known as Recursive Relationship.

**ER Diagram: Ternary Relationship**

Relationship of degree three is called Ternary relationship.

A Ternary relationship involves three entities. In such relationships we always consider two entities together and then look upon the third.



- The above relationship involves 3 entities.
- Company operates in Sector, producing some Products.

For example, in the diagram above, we have three related entities, Company, Product and Sector. To understand the relationship better or to define rules around the model, we should relate two entities and then derive the third one. A Company produces many Products/ each product is produced by exactly one company. A Company operates in only one Sector / each sector has many companies operating in it.

Considering the above two rules or relationships, we see that although the complete relationship involves three entities, but we are looking at two entities at a time.

**The Enhanced ER Model**

As the complexity of data increased in the late 1980s, it became more and more difficult to use the traditional ER Model for database modelling. Hence some improvements or enhancements were made to the existing ER Model to make it able to handle the complex applications better.

Hence, as part of the Enhanced ER Model, along with other improvements, three new concepts were added to the existing ER Model, they were:

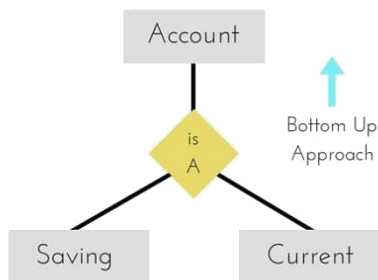
1. Generalization
2. Specialization
3. Aggregation

**Generalization**

Generalization is a bottom-up approach in which two lower level entities combine to form a higher level entity. In generalization, the higher level entity can also combine with other lower level entities to make further higher level entity.

It's more like Superclass and Subclass system, but the only difference is the approach, which is bottom-up. Hence, entities are combined to form a more generalised entity, in other words, sub-classes are combined to form a super-

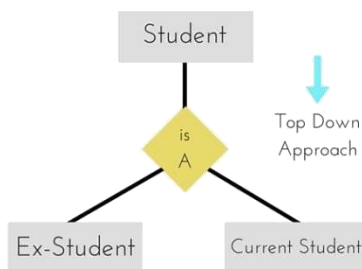
class.



For example, Saving and Current account types entities can be generalised and an entity with name Account can be created, which covers both.

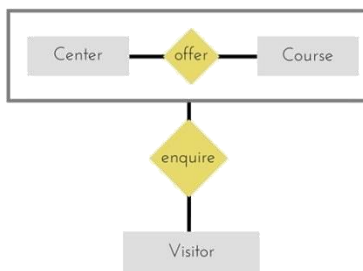
### Specialization

Specialization is opposite to Generalization. It is a top-down approach in which one higher level entity can be broken down into two lower level entity. In specialization, a higher level entity may not have any lower-level entity sets, it's possible.



### Aggregation

Aggregation is a process when relation between two entities is treated as a single entity.



In the diagram above, the relationship between Center and Course together, is acting as an Entity, which is in relationship with another entity Visitor. Now in real world, if a Visitor or a Student visits a Coaching Center, he/she will never enquire about the center only or just about the course, rather he/she will ask enquire about both.

### ER Model to Relational Model

ER Model can be represented using ER Diagrams which is a great way of designing and representing the database design in more of a flow chart form.

It is very convenient to design the database using the ER Model by creating an ER diagram and later on converting it into relational model to design your tables.

Not all the ER Model constraints and components can be directly transformed into relational model, but an approximate schema can be derived.

Few examples of ER diagrams and convert it into relational model schema, hence creating tables in RDBMS.

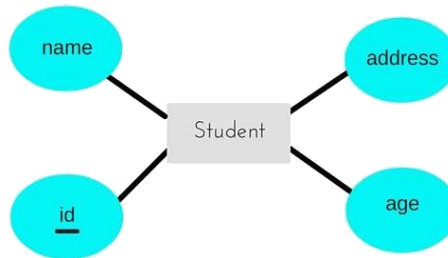
### Entity becomes Table

Entity in ER Model is changed into tables, or we can say for every Entity in ER model, a table is created in Relational Model.

And the attributes of the Entity gets converted to columns of the table.

And the primary key specified for the entity in the ER model, will become the primary key for the table in relational model.

For example, for the below ER Diagram in ER Model,



A table with name Student will be created in relational model, which will have 4 columns, id, name, age, address and id will be the primary key for this table.

#### Table:Student

<u>id</u>	name	age	address
-----------	------	-----	---------

### Relationship becomes a Relationship Table

In ER diagram, we use diamond/rhombus to represent a relationship between two entities. In Relational model we create a relationship table for ER Model relationships too.

In the ER diagram below, we have two entities Teacher and Student with a relationship between them.



As discussed above, entity gets mapped to table, hence we will create table for Teacher and a table for Student with all the attributes converted into columns.

Now, an additional table will be created for the relationship, for example StudentTeacher or give it any name you like. This table will hold the primary key for both Student and Teacher, in a tuple to describe the relationship, which teacher teaches which student.

If there are additional attributes related to this relationship, then they become the columns for this table, like subject

name.

Also proper foreign key constraints must be set for all the tables.

### Functional Dependency

The functional dependency is a relationship that exists between two attributes. It typically exists between the primary key and non-key attribute within a table.

$$X \rightarrow Y$$

The left side of FD is known as a determinant, the right side of the production is known as a dependent.

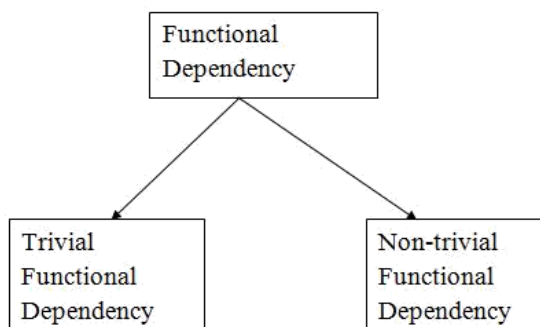
#### For example:

Assume we have an employee table with attributes: Emp\_Id, Emp\_Name, Emp\_Address.

Here Emp\_Id attribute can uniquely identify the Emp\_Name attribute of employee table because if we know the Emp\_Id, we can tell that employee name associated with it. Functional dependency can be written as:

$$\text{Emp\_Id} \rightarrow \text{Emp\_Name}$$

### Types of Functional dependency



### Trivial functional dependency

- $A \rightarrow B$  has trivial functional dependency if B is a subset of A. ○
- The following dependencies are also trivial like:  $A \rightarrow A, B \rightarrow B$

#### Example:

Consider a table with two columns Employee\_Id and Employee\_Name.

$\{\text{Employee\_id}, \text{Employee\_Name}\} \rightarrow \text{Employee\_Id}$  is a trivial functional dependency as

Employee\_Id is a subset of  $\{\text{Employee\_Id}, \text{Employee\_Name}\}$ .

3. Also,  $\text{Employee\_Id} \rightarrow \text{Employee\_Id}$  and  $\text{Employee\_Name} \rightarrow \text{Employee\_Name}$  are trivial dependencies too.

### Non-trivial functional dependency

$A \rightarrow B$  has a non-trivial functional dependency if B is not a subset of A.

When  $A \cap B$  is NULL, then  $A \rightarrow B$  is called as complete non-trivial.

#### Example:

$$\begin{aligned} \text{ID} &\rightarrow \text{Name,} \\ \text{Name} &\rightarrow \text{DOB} \end{aligned}$$

### Normalization of Database

Database Normalization is a technique of organizing the data in the database. Normalization is a systematic

approach of decomposing tables to eliminate data redundancy(repetition) and undesirable characteristics like Insertion, Update and Deletion anomalies. It is a multi-step process that puts data into tabular form, removing duplicated data from the relation tables.

Normalization is used for mainly two purposes,

- Eliminating redundant(useless) data.
- Ensuring data dependencies make sense i.e data is logically stored.

### Problems Without Normalization

If a table is not properly normalized and have data redundancy then it will not only eat up extra memory space but will also make it difficult to handle and update the database, without facing data loss. Insertion, Updation and Deletion Anomalies are very frequent if database is not normalized. To understand these anomalies let us take an example of a Student table.

rollno	name	branch	hod	office_tel
401	Akon	CSE	Mr. X	53337
402	Bkon	CSE	Mr. X	53337
403	Ckon	CSE	Mr. X	53337
404	Dkon	CSE	Mr. X	53337

In the table above, we have data of 4 Computer Sci. students. As we can see, data for the fields branch, hod(Head of Department) and office\_tel is repeated for the students who are in the same branch in the college, this is Data Redundancy.

### Insertion Anomaly

Suppose for a new admission, until and unless a student opts for a branch, data of the student cannot be inserted, or else we will have to set the branch information as NULL.

Also, if we have to insert data of 100 students of same branch, then the branch information will be repeated for all those 100 students.

These scenarios are nothing but Insertion anomalies.

### Updation Anomaly

What if Mr. X leaves the college? or is no longer the HOD of computer science department? In that case all the student records will have to be updated, and if by mistake we miss any record, it will lead to data inconsistency. This is Updation anomaly.

### Deletion Anomaly

In our Student table, two different informations are kept together, Student information and Branch information. Hence, at the end of the academic year, if student records are deleted, we will also lose the branch information. This is Deletion anomaly.

## Normalization Rule

Normalization rules are divided into the following normal forms:

1. First Normal Form
2. Second Normal Form
3. Third Normal Form
4. BCNF
5. Fourth Normal Form
6. Fifth Normal Form

### First Normal Form (1NF)

For a table to be in the First Normal Form, it should follow the following 4 rules:

1. It should only have single(atomic) valued attributes/columns.
2. Values stored in a column should be of the same domain
3. All the columns in a table should have unique names.
4. And the order in which data is stored, does not matter.

### Rules for First Normal Form

The first normal form expects you to follow a few simple rules while designing your database, and they are:

#### Rule 1: Single Valued Attributes

Each column of your table should be single valued which means they should not contain multiple values. We will explain this with help of an example later, let's see the other rules for now.

#### Rule 2: Attribute Domain should not change

This is more of a "Common Sense" rule. In each column the values stored must be of the same kind or type.

**For example:** If you have a column dob to save date of births of a set of people, then you cannot or you must not save 'names' of some of them in that column along with 'date of birth' of others in that column. It should hold only 'date of birth' for all the records/rows.

#### Rule 3: Unique name for Attributes/Columns

This rule expects that each column in a table should have a unique name. This is to avoid confusion at the time of retrieving data or performing any other operation on the stored data.

If one or more columns have same name, then the DBMS system will be left confused.

#### Rule 4: Order doesn't matters

This rule says that the order in which you store the data in your table doesn't matter.

### EXAMPLE

Create a table to store student data which will have student's roll no., their name and the name of subjects they have opted for.

Here is the table, with some sample data added to it.

roll_no	name	subject
101	Akon	OS, CN
103	Ckon	Java
102	Bkon	C, C++

The table already satisfies 3 rules out of the 4 rules, as all our column names are unique, we have stored data in the order we wanted to and we have not inter-mixed different type of data in columns.

But out of the 3 different students in our table, 2 have opted for more than 1 subject. And we have stored the subject names in a single column. But as per the 1st Normal form each column must contain atomic value. It's very simple, because all we have to do is break the values into atomic values.

Here is our updated table and it now satisfies the First Normal Form.

roll_no	name	subject
101	Akon	OS
101	Akon	CN
103	Ckon	Java
102	Bkon	C
102	Bkon	C++

By doing so, although a few values are getting repeated but values for the subject column are now atomic for each record/row. Using the First Normal Form, data redundancy increases, as there will be many columns with same data in multiple rows but each row as a whole will be unique.

### Second Normal Form (2NF)

For a table to be in the Second Normal Form,

1. It should be in the First Normal form.
2. And, it should not have Partial Dependency.

### Dependency

Let's take an example of a Student table with columns student\_id, name, reg\_no(registration number), branch and address(student's home address).

student_id	name	reg_no	branch	address

In this table, student\_id is the primary key and will be unique for every row, hence we can use student\_id to fetch any row of data from this table

Even for a case, where student names are same, if we know the student\_id we can easily fetch the correct record.

student_id	name	reg_no	branch	address
10	Akon	07-WY	CSE	Kerala
11	Akon	08-WY	IT	Gujarat

Hence we can say a Primary Key for a table is the column or a group of columns(composite key) which can uniquely identify each record in the table.

I can ask from branch name of student with student\_id 10, and I can get it. Similarly, if I ask for name of student with student\_id 10 or 11, I will get it. So all I need is student\_id and every other column depends on it, or can be fetched using it. This is Dependency and we also call it Functional Dependency.

### Partial Dependency

Now that we know what dependency is, we are in a better state to understand what partial dependency is. For a simple table like Student, a single column like student\_id can uniquely identify all the records in a table. But this is not true all the time. So now let's extend our example to see if more than 1 column together can act

as a primary key.

Let's create another table for Subject, which will have subject\_id and subject\_name fields and subject\_id will be the primary key.

subject_id	subject_name
1	Java
2	C++
3	Php

Now we have a Student table with student information and another table Subject for storing subject information.

Let's create another table Score, to store the marks obtained by students in the respective subjects. We will also be saving name of the teacher who teaches that subject along with marks.

score_id	student_id	subject_id	marks	teacher
1	10	1	70	Java Teacher
2	10	2	75	C++ Teacher
3	11	1	80	Java Teacher

In the score table we are saving the **student\_id** to know which student's marks are these and **subject\_id** to know for which subject the marks are for.

Together, student\_id + subject\_id forms a **Candidate Key** which can be the **Primary key**.

To get me marks of student with student\_id 10, can you get it from this table? No, because you don't know for which subject. And if I give you subject\_id, you would not know for which student. Hence we need student\_id + subject\_id to uniquely identify any row.

### But where is Partial Dependency?

Now if you look at the Score table, we have a column names teacher which is only dependent on the subject, for Java it's Java Teacher and for C++ it's C++ Teacher & so on.

Now as we just discussed that the primary key for this table is a composition of two columns which is student\_id & subject\_id but the teacher's name only depends on subject, hence the subject\_id, and has nothing to do with student\_id.

This is Partial Dependency, where an attribute in a table depends on only a part of the primary key and not on the whole key.

### How to remove Partial Dependency?

There can be many different solutions for this, but our objective is to remove teacher's name from Score table. The simplest solution is to remove columns teacher from Score table and add it to the Subject table. Hence, the Subject table will become:

subject_id	subject_name	teacher
1	Java	Java Teacher
2	C++	C++ Teacher
3	Php	Php Teacher

And our Score table is now in the second normal form, with no partial dependency.

score_id	student_id	subject_id	marks
1	10	1	70
2	10	2	75
3	11		

### Third Normal Form (3NF)

A table is said to be in the Third Normal Form when,

1. It is in the Second Normal form.
2. And, it doesn't have Transitive Dependency.

So let's use the same example, where we have 3 tables, **Student**, **Subject** and **Score**.

#### Student Table

student_id	name	reg_no	branch	address
10	Akon	07-WY	CSE	Kerala
11	Akon	08-WY	IT	Gujarat
12	Bkon	09-WY	IT	Rajasthan

#### Subject Table

subject_id	subject_name	teacher
1	Java	Java Teacher
2	C++	C++ Teacher
3	Php	Php Teacher

#### Score Table

In the Score table, we need to store some more information, which is the exam name and total marks, so let's add 2 more columns to the Score table.

score_id	student_id	subject_id	marks
1	10	1	70
2	10	2	75
3	11	1	80

### Transitive Dependency

With exam\_name and total\_marks added to our Score table, it saves more data now. Primary key for the Score table is a composite key, which means it's made up of two attributes or columns → student\_id + subject\_id. The new column exam\_name depends on both student and subject. For example, a mechanical engineering student will have Workshop exam but a computer science student won't. And for some subjects you have Practical exams and for some you don't. So we can say that exam\_name is dependent on both student\_id and subject\_id.

And what about our second new column total\_marks? Does it depend on our Score table's primary key?

Well, the column total\_marks depends on exam\_name as with exam type the total score changes. For example, practicals are of less marks while theory exams are of more marks.

But, exam\_name is just another column in the score table. It is not a primary key or even a part of the primary key, and total\_marks depends on it.

This is Transitive Dependency. When a non-prime attribute depends on other non-prime attributes rather than depending upon the prime attributes or primary key.

### How to remove Transitive Dependency

Again the solution is very simple. Take out the columns exam\_name and total\_marks from Score table and put them in an Exam table and use the exam\_id wherever required.

### Score Table: In 3rd Normal Form

score_id	student_id	subject_id	marks	exam_id

### The new Exam table

exam_id	exam_name	total_marks
1	Workshop	200
2	Mains	70
3	Practicals	30

### Advantage of removing Transitive Dependency

The advantage of removing transitive dependency is,

- Amount of data duplication is reduced.
- Data integrity achieved.

### Boyce and Codd Normal Form (BCNF)

Boyce and Codd Normal Form is a higher version of the Third Normal form. This form deals with certain type of anomaly that is not handled by 3NF. A 3NF table which does not have multiple overlapping candidate keys is said to be in BCNF. For a table to be in BCNF, following conditions must be satisfied:

- R must be in 3rd Normal Form
- and, for each functional dependency (  $X \rightarrow Y$  ), X should be a super Key. In simple words, it means, that for a dependency  $A \rightarrow B$ , A cannot be a non-prime attribute, if B is a prime attribute.

### Example

College enrolment table with columns student\_id, subject and professor.

student_id	subject	professor
101	Java	P.Java
101	C++	P.Cpp
102	Java	P.Java2
103	C#	P.Chash
104	Java	P.Java

In the table above:

One student can enroll for multiple subjects. For example, student with student\_id 101, has opted for subjects - Java & C++

- For each subject, a professor is assigned to the student.
- And, there can be multiple professors teaching one subject like Java.

What do you think should be the Primary Key?

Well, in the table above student\_id, subject together form the primary key, because using student\_id and subject, we can find all the columns of the table.

One more important point to note here is, one professor teaches only one subject, but one subject may have two different professors.

Hence, there is a dependency between subject and professor here, where subject depends on the professor name.

This table satisfies the 1st Normal form because all the values are atomic, column names are unique and all the values stored in a particular column are of same domain.

This table also satisfies the 2nd Normal Form as there is no Partial Dependency.

And, there is no Transitive Dependency, hence the table also satisfies the 3rd Normal Form.

But this table is not in Boyce-Codd Normal Form.

**Why this table is not in BCNF?**

In the table above, student\_id, subject form primary key, which means subject column is a prime attribute.

But, there is one more dependency, professor → subject.

And while subject is a prime attribute, professor is a non-prime attribute, which is not allowed by BCNF.

**How to satisfy BCNF?**

To make this relation(table) satisfy BCNF, we will decompose this table into two tables, student table and professor table.

Below we have the structure for both the tables.

**Student Table**

student_id	p_id
101	1
101	2

**Professor Table**

p_id	professor	subject
1	P.Java	Java
2	P.Cpp	C++

And now, this relation satisfy Boyce-Codd Normal Form.

**Fourth Normal Form (4NF)**

A table is said to be in the Fourth Normal Form when,

1. It is in the Boyce-Codd Normal Form.
2. And, it doesn't have Multi-Valued Dependency.

**Multi-valued Dependency**

A table is said to have multi-valued dependency, if the following conditions are true,

1. For a dependency  $A \twoheadrightarrow B$ , if for a single value of A, multiple value of B exists, then the table may have multi-valued dependency.
2. Also, a table should have at-least 3 columns for it to have a multi-valued dependency.
3. And, for a relation  $R(A,B,C)$ , if there is a multi-valued dependency between, A and B, then B and C should be independent of each other.

If all these conditions are true for any relation(table), it is said to have multi-valued dependency.

**Example**

Below we have a college enrolment table with columns s\_id, course and hobby.

s_id	course	hobby
1	Science	Cricket
1	Maths	Hockey
2	C#	Cricket
2	Php	Hockey

From the table above, student with s\_id 1 has opted for two courses, Science and Maths, and has two hobbies, Cricket and Hockey.

You must be thinking what problem this can lead to, right?

Well the two records for student with s\_id 1, will give rise to two more records, as shown below, because for one student, two hobbies exists, hence along with both the courses, these hobbies should be specified.

s_id	course	hobby
1	Science	Cricket
1	Maths	Hockey
1	Science	Hockey
1	Maths	Cricket

And, in the table above, there is no relationship between the columns course and hobby. They are independent of each other.

So there is multi-value dependency, which leads to un-necessary repetition of data and other anomalies as well.

**How to satisfy 4th Normal Form?**

To make the above relation satisfy the 4th normal form, we can decompose the table into 2 tables.

**CourseOpted Table**

s_id	course
1	Science
1	Maths
2	C#
2	Php

**Hobbies Table,**

s_id	hobby
1	Cricket
1	Hockey
2	Cricket
2	Hockey

Now this relation satisfies the fourth normal form.

A table can also have functional dependency along with multi-valued dependency. In that case, the functionally dependent columns are moved in a separate table and the multi-valued dependent columns are moved to separate tables.

### Fifth Normal Form (5NF)

A database is said to be in 5NF, if and only if,

1. It's in 4NF
2. If we can decompose table further to eliminate redundancy and anomaly, and when we re-join the decomposed tables by means of candidate keys, we should not be losing the original data or any new record set should not arise. In simple words, joining two or more decomposed table should not lose records nor create new records.

### What is Join Dependency

If a table can be recreated by joining multiple tables and each of this table have a subset of the attributes of the table, then the table is in Join Dependency. It is a generalization of Multivalued Dependency. Join Dependency can be related to 5NF, wherein a relation is in 5NF, only if it is already in 4NF and it cannot be decomposed further.

Example

<Employee>

EmpName	EmpSkills	EmpJob (Assigned Work)
Tom	Networking	EJ001
Harry	Web Development	EJ002
Katie	Programming	EJ002

The above table can be decomposed into the following three tables; therefore it is not in 5NF:

<EmployeeSkills>

EmpName	EmpSkills
Tom	Networking
Harry	Web Development
Katie	Programming

<EmployeeJob>

EmpName	EmpJob
Tom	EJ001
Harry	EJ002
Katie	EJ002

<JobSkills>

EmpSkills	EmpJob
Networking	EJ001
Web Development	EJ002
Programming	EJ002

Our Join Dependency:

{(EmpName, EmpSkills ), ( EmpName, EmpJob), (EmpSkills, EmpJob)}

The above relations have join dependency, so they are not in 5NF. That would mean that a join relation of the above three relations is equal to our original relation <Employee>.

**FIFTH NORMAL FORM EXAMPLE**

Consider an example of different Subjects taught by different lecturers and the lecturers taking classes for different semesters.

**Note:** Please consider that Semester 1 has Mathematics, Physics and Chemistry and Semester 2 has only Mathematics in its academic year!!

COURSE	SUBJECT	LECTURER	CLASS
SUBJECT	Mathematics	Alex	SEMESTER 1
LECTURER	Mathematics	Rose	SEMESTER 1
CLASS	Physics	Rose	SEMESTER 1
	Physics	Joseph	SEMESTER 2
	Chemistry	Adam	SEMESTER 1

In above table, Rose takes both Mathematics and Physics class for Semester 1, but she does not take Physics class for Semester 2. In this case, combination of all these 3 fields is required to identify a valid data. Imagine we want to add a new class - Semester3 but do not know which Subject and who will be taking that subject. We would be simply inserting a new entry with Class as Semester3 and leaving Lecturer and subject as NULL. As we discussed above, it's not a good to have such entries. Moreover, all the three columns together act as a primary key, we cannot leave other two columns blank!

Hence we have to decompose the table in such a way that it satisfies all the rules till 4NF and when join them by using keys, it should yield correct record. Here, we can represent each lecturer's Subject area and their classes in a better way. We can divide above table into three - (SUBJECT, LECTURER), (LECTURER, CLASS), (SUBJECT, CLASS)

5NF			
SUBJECT	LECTURER	CLASS	LECTURER
Mathematics	Alex	SEMESTER 1	Alex
Mathematics	Rose	SEMESTER 1	Rose
Physics	Rose	SEMESTER 1	Rose
Physics	Joseph	SEMESTER 2	Joseph
Chemistry	Adam	SEMESTER 1	Adam

CLASS	SUBJECT
SEMESTER 1	Mathematics
SEMESTER 1	Physics
SEMESTER 1	Chemistry
SEMESTER 2	Physics

Now, each of combinations is in three different tables. If we need to identify who is teaching which subject to which semester, we need join the keys of each table and get the result.

For example, who teaches Physics to Semester 1, we would be selecting Physics and Semester1 from table 3 above, join with table1 using Subject to filter out the lecturer names. Then join with table2 using Lecturer to get correct lecturer name. That is we joined key columns of each table to get the correct data. Hence there is no lose or new data - satisfying 5NF condition.